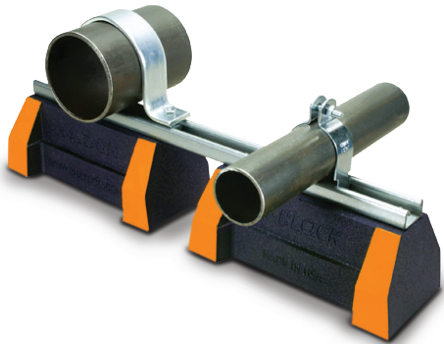


H-Block Special Features

- 100% Recycled Rubber
- LEED® certifiable
- Independent laboratory tested
- Resistance to freeze and thaw
- Eliminates need for roof penetrations
- No deterioration
- Dampens vibrations
- Compatible with most rooftop materials
- All 4 corners coated with reflective safety orange for maximum visibility

The channel for H-Block support assemblies includes a variety of options. The strut can be made in special lengths, finishes, and alloys including aluminum, stainless steel both 304 & 316, PVC coated, powder coated, zinc trivalent chromium, pre-galvanized and hot dipped galvanized.



Our product line has systems to support all of the following applications:

- Solar racking
- Pipe & conduit supports
- Duct supports
- HVAC supports
- Cable tray systems
- Air conditioning supports
- Roof walkway supports

For more information contact your local ASC Engineered Solutions Sales Representative.



About ASC Engineered Solutions

ASC Engineered Solutions is defined by quality—in its products, services and support. With more than 1,400 employees, the company's portfolio of precision-engineered piping support, valves and connections provides products to more than 4,000 customers across industries, such as mechanical, industrial, fire protection, oil and gas, and commercial and residential construction. Its portfolio of leading brands includes ABZ Valve®, AFCON®, Anvil®, Anvil EPS, Anvil Services, Basic-PSA, Beck®, Catawissa, Cooplet®, FlexHead®, FPPI®, Gruvlok®, J.B. Smith, Merit®, North Alabama Pipe, Quadrant®, SCI®, Sharpe®, SlideLOK®, SPF® and SprinkFLEX®. With headquarters in Commerce, CA, and Exeter, NH, ASC also has ISO 9001:2015 certified production facilities in PA, TN, IL, TX, AL, LA, KS, and RI.



asc-es.com

Building connections that last™

ASC-BRO-H-Block Rooftop Support Systems-v01 | 02.21



H-Block Rooftop Support Systems

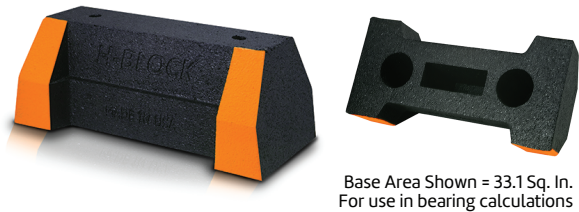


 100% Recycled Rubber
LEED® Certifiable
UV Resistant
Made in USA

HAYDON®

H-Block Rooftop Support Systems

ASC Engineered Solutions's™ H-Block Supports will provide a full complement of products to support gas and refrigeration piping, plumbing, multiple lines, electrical conduit, ductwork, HVAC, and many other applications. H-Block roof supports are pre-assembled and are suitable for installation on most types of roofing material and other flat surfaces. Please visit www.asc-es.com to view or download more product information, including load capacities.



Base Area Shown = 33.1 Sq. In.
For use in bearing calculations

HBS-Base Series

The HBS-Base Series is UV resistant and suitable for installation on most types of roofing material or other flat surfaces. These products can be used as a curb (sleeper) replacement. Screw fasteners can be used to attach one or two hole pipe straps or a piece of strut (not included).

HBS-Base Series

Model No.	Height	Width	Base Length	Weight	Uniform Load Capacity (lbs)
HBS-Standard- Base Only	4" (101 mm)	5" (127 mm)	10 ⁷ / ₈ " (276 mm)	4.80"	2500*

*This load is only for the capacity of the components in this assembly. Please consult roofing manufacturer or engineer for roof load capacity.



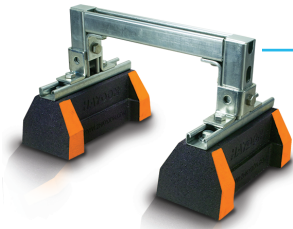
**HBS-DSFW
Fixed Width
Duct Support**

Duct Support with fixed width and adjustable height



**HBS-DSAW
Adjustable Width
Duct Support**

Duct Support with adjustable width and height



HBS-CES-Medium

Raised Bridge length with 2 HBS bases 1⁵/₈" H-132 pre-galv. steel channel

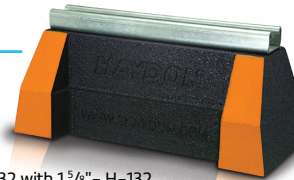
HBS-CES-Heavy

Raised Bridge length with 2 HBS bases 3¹/₄" H-132-A pre-galv. steel channel

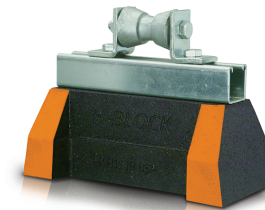


HBS Series - H-164

HBS-Support with H-164 1³/₁₆" pre-galv. steel channel



Not Shown: HBS Series - H-132 with 1⁵/₈" H-132 steel channel and HBS-6 Series-H-122 with 2⁷/₁₆" H-122 steel channel.

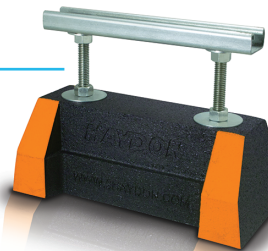


HBS Roller Series

HBS-Base with 1⁵/₈" H-132 pre-galv. steel channel and rollers

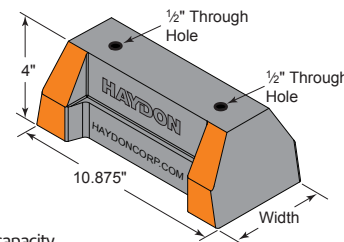
HBS-CE Extension Series

HBS-Support with threaded rod extension and 1³/₁₆" H-164 pre-galv. steel channel



HBS-CB Bridge Series

Bridge Length Support with 2 HBS bases and 1⁵/₈" H-132 pre-galv. steel channel



HAYDON

Please consult roofing manufacturer or engineer for roof load capacities.